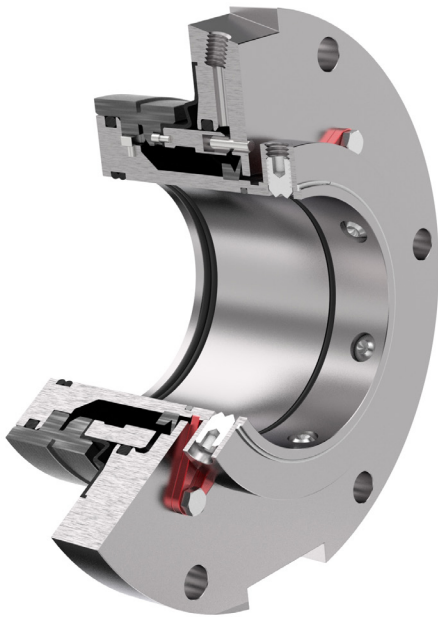


Thomson Mechanical Seals

TAC-600



Thomson TAC-600 heavy duty flush less slurry seal.

The Thomson TAC-600 a unique stationary sprung slurry seal design. Utilizing state of the art designs and materials that deliver a seal with excellent reliability.

FEATURES / BENEFITS

- Unique device to eliminate the possibility of face hang up.
- Suitable for smaller seal chambers than traditional slurry seals.
- Abrasion and corrosion resistant metallurgy matching the pump wetted parts.
- Pre-set cartridge simplifying installation.
- Self aligning face technology.
- Wrapped faces, reduces abrasive contact with metallurgy.

TYPICAL APPLICATIONS

- Heavy slurry applications.
- No flush available.
- Mining.
- Ore processing.
- Pulp and Paper.

SPECIFICATIONS

All operating range information is dependent on media, materials of construction, and support systems used. Please contact A.R. Thomson mechanical seal services department for more information.

Temperatures:
300°F (150°C)

Max Shaft Speed:
< 25m/s (< 4920 fpm)

Max Pressure:
300 PSI (20 bar)

*For pressures in excess of 150 psi (10 bar) consult A.R. Thomson.

STANDARD MATERIALS

Wetted Parts*: CD4MCuN

Face Materials: Silicone Carbide, Tungsten Carbide

Elastomers: FKM, NBR, EPDM

Springs: Hastelloy C

*Other abrasion/corrosion-resistant materials available.

OTHER PRODUCTS



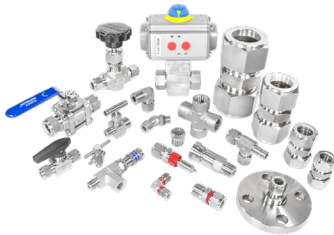
METALLIC GASKETS

Thomson CANFLEX® spiral wound, Kamprofile, high temperature, heat exchanger and ring joint gaskets. We manufacture gaskets from all common metals, exotic alloys and filler materials in all configurations for the most extreme applications.



FASTENERS

All thread studs – ASTM 193 Grade B7, B7M, B8, B8M, B16, ASTM A320 L7, L7M; heavy hex nuts – ASTM A194 Grade 2H, 2HM, 4, L7, L7M, 8 and 8M; Through hardened washers – ASTM F-436; custom coatings; specialty fabricated and machined studs; CANFLEX® approved thread lubricant.



SUPERLOK CANADA

Instrumentation Tube, Pipe, JIC and DIN Fittings. Instrumentation Ball, Bleed, Check, Double Block and Bleed, Needle, Plug, and Purge Relief Valves. Quick Connects and Filters. Flexible Metal Hose, Tubing and Accessories.



NON-METALLIC GASKETS

Thomson Performance Sealing (TSP) and gaskets fabricated from all types of sheet material including compressed, cork/rubber blends, gasket types, Teflon™, Garlock®, Gore®, all rubber materials, Thomson Multipac™ and Flexible Graphite.

AUTHORIZED DISTRIBUTOR



Limitation of liability: actual performance may vary and is determined by factors unique to a given application. It is recommended that care be taken in the selection and application of materials for hazardous services and controlled testing be undertaken to determine suitability for a specific application. A.R. Thomson Group Inc. does not make or imply any warranty of suitability for a particular purpose and is not liable for any damages arising from the use of the information in this sheet.

 **A.R. THOMSON GROUP INC.**

Locations across Canada to serve you. For your nearest branch, please visit: www.arthomson.com

Copyright © A.R. Thomson Group Inc. - All rights reserved.

arthomson.com